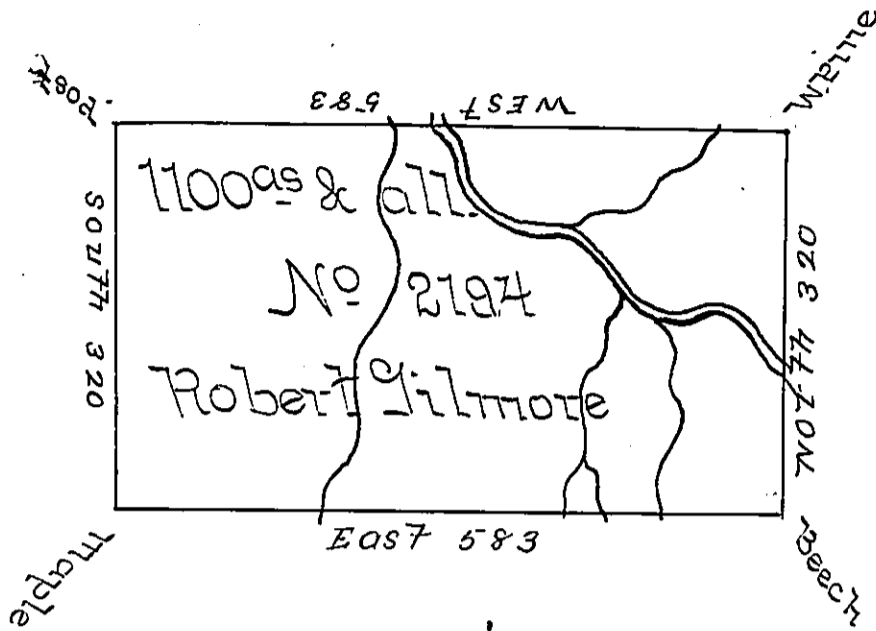


No 63.

No 2288

K-500

C-71-17
No 2210



No 2187
A-46-89

A-51-163

No 2160

Situate on the Oswaye Creek about three Miles South of the State Line in North County containing 1100 and the usual Allowance for Roads &c
 Surveyed June 20th 1793 for Robert Gilmore in pursuance of a Warrant No 2194 bearing date 12th December 1792.

John Canan D.S.

Daniel Brodhead Esq: S.S.

IN TESTIMONY that the above is a copy of the original remaining on file in the Department of Internal Affairs of Pennsylvania, made conformably to an Act of Assembly approved the 16th day of February, 1833, I have hereunto set my Hand and caused the Seal of said Department to be affixed at Harrisburg, this first day of November 1898.

James W. Latta
 Secretary of Internal Affairs.